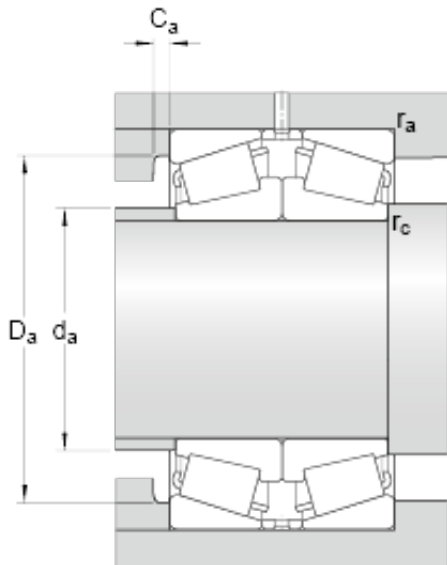




# GF BEARING-SINGAPORE LTD.



32213/DF Bearing 2D drawings and 3D CAD models

skf 32213/DF Matched Single row tapered roller bearings arranged face-to-face

Bearing No. 32213/DF

d	65 mm
D	120 mm
T	65.5 mm
2B	62 mm
b	7 mm
K	3 mm
$r_{3,4}$ min.	1.5 mm
$r_5$ min.	0.6 mm
$d_a$ max.	76 mm
$D_a$ min.	104 mm
$D_a$ max.	111.5 mm
$C_a$ min.	4 mm
$r_a$ max.	1.5 mm
$r_c$ max.	0.6 mm
Basic dynamic load rating C	320 kN
Basic static load rating $C_0$	390 kN
Fatigue load limit $P_u$	45.5 kN
Reference speed	3600 r/min
Limiting speed	5600 r/min
Calculation factor e	0.4
Calculation factor $Y_1$	1.7
Calculation factor $Y_2$	2.5
Calculation factor $Y_0$	1.6
Mass bearing pair	3.09 kg