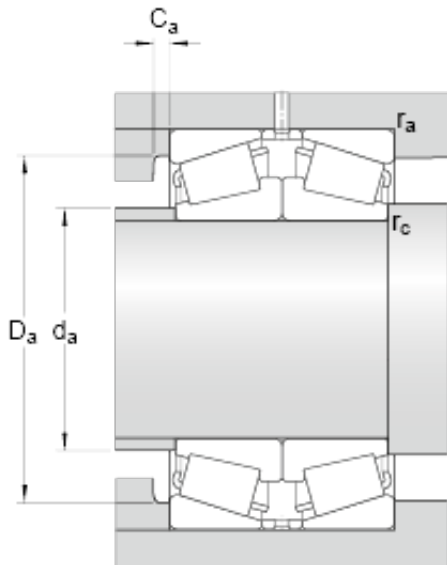




GF BEARING-SINGAPORE LTD.



32260/DF Bearing 2D drawings and 3D CAD models

skf 32260/DF Matched Single row tapered roller bearings arranged face-to-face

Bearing No. 32260/DF

d	300 mm
D	540 mm
T	280 mm
2B	298 mm
b	36 mm
K	18 mm
$r_{3,4}$ min.	5 mm
r_5 min.	1.5 mm
d_a max.	343 mm
D_a min.	453 mm
D_a max.	518 mm
C_a min.	10 mm
r_a max.	4 mm
r_c max.	1.5 mm
Basic dynamic load rating C	2935 kN
Basic static load rating C_0	9500 kN
Fatigue load limit P_u	735 kN
Reference speed	630 r/min
Limiting speed	1100 r/min
Calculation factor e	0.43
Calculation factor Y_1	1.6
Calculation factor Y_2	2.3
Calculation factor Y_0	1.6
Mass bearing pair	290 kg